

# ADT: Survey Admin Version 1.0

## Requirements Specification

<b>Author</b>	Janet
<b>Version</b>	1.0
<b>Printed</b>	2001-10-22 2:54 PM

---

## Document Revisions

Revisions on this document should be recorded in the table below:

	<b>Date</b>	<b>Description</b>	<b>Author</b>
1	2001-10-22	First Draft	Janet
2	10 September 2001	First Edit	Josh
3	10 September 2001	Second Edit	Josh
4	16 October 2001	Screenshots, Params, Views, Editing	Josh

---

# TABLE OF CONTENTS

<b>1 Introduction</b>	<b>4</b>	
1.1 Purpose of this document		4
1.2 Scope of this document		4
1.3 Overview		4
1.4 Business Context		4
<b>2 General Description</b>	<b>4</b>	
2.1 Product Functions		4
2.2 General Constraints		4
<b>3 Functional Requirements</b>	<b>11</b>	
3.1 Survey Application		11
3.1.1 <i>Description</i>		11
3.1.2 <i>Risks and Dependencies</i>		20
<b>4 Database Design</b>		Error! Bookmark not defined.
4.1 Description		20
4.2 Communications Interfaces		21
<b>5 Other non-functional attributes</b>	<b>21</b>	
5.1 Reliability		21
5.2 Maintainability		21
5.3 Portability		21
5.4 Extensibility		21
5.5 Reusability		21
5.6 Serviceability		21

# 1 Introduction

## 1.1 Purpose of this document

The purpose of this document is to specify the functional and system specification of the Survey application. This document provides a road-map through which the implementation of the application will be developed and where applicable, will also contain information detailing technical design constraints and assumptions.

## 1.2 Scope of this document

The specification covers the functional specifications of the Survey application. This specification does not extend to third party or infrastructure components.

## 1.3 Overview

The basic requirements summary for the Survey application:

- To provide any user with the ability to answer a basic survey form.
- To allow the Administrator to view the results.

## 1.4 Business Context

Survey Admin allows administrators of Survey to view the results and edit the data. Businesses and individuals may wish to use this program to gather data about a particular topic from their website users. The generic version is open source for distribution. Anyone may take advantage of the powerful eXtropa Perl ADT. Improvements will be made incrementally as bug reports come in and suggestions are made. The generic Survey will ultimately benefit both the company and our users.

# 2 General Description

## 2.1 Product Functions

The general functionality of the Survey application is to allow users to answer the survey. The administrator may view the records.

## 2.2 General Constraints

The application will be written in Perl and the data files are stored in a common flat file system (ASCII File). This will slow down in terms of searching for information if there is a presence of huge database.

The application is also able to interface with relational databases should the administrator desire it.

**Bold Params** indicate Section Headings. *Italic Params* are objects.

Indented Params are configurable variables.

Grayed out or missing items are not required or not available in the default configuration.

Param	Default configuration	Notes
<b>Language</b>	Perl	
<b>Session Setup</b>		
Type	File	Note that flatfile data sources are slow. We recommend upgrading to a database based data source
Max Modify Time	1 hour	
Fatal Timeout	Off	
Fatal if session not found	Off	
<i>Session Manager Setup</i>		
Type	FormVar	
Cgi Object	\$CGI	
Session Params	Session Config Params	
<b>Authentication Setup</b>		For the datasource
Type	File	
Field Delimeter	(pipe)	
Create a file if none exists	On	
Field Names	From Auth User Datasource	
File	Scriptname.users.dat	Path is set at start of script
Default Authentication Fields	Username, password, groups, firstname, lastname, email	
<b>Authentication Manager Setup</b>		How requests are processed
Color for even rows	E5E5E5	
Color for Odd Rows	FFFFFF	
CSS View URL	\$CSS_VIEW_URL	
Application Logo	logo.gif	
Application Logo Height	40	
Application Logo Width	353	
Application Logo ALT	WebDB Demo	
HTTP Header Params	[-EXPIRES => '-1d']	
Document Root URL	'/' or web root directory	
Image Root URL	/Images/Extropa	
Script Display Name	'Swing Survey'	
Script Name	\$CGI->script_name()	
Page Top View	PageTopView	
Page Bottom View	PageBottomView	
Link Target	'_self' or current window	
<i>User_Fields</i>	Auth_username, auth_password, auth_groups, auth_firstname, auth_lastname, auth_email	
<i>Mail Params</i>		
Type	Sendmail	Default on most systems
<i>User Mail Send Params</i>		
From	you@yourdomain.com	

Subject	Password Generated	
<i>Admin Mail Send Params</i>		
From	you@yourdomain.com	
To	you@yourdomain.com	
Subject	Registration Notification	
<i>Auth Manager Config Params</i>		
Type	CGI	
Allow Registration	On	
Allow User Search	On	Allow anyone to checkfor an old account.
Generate Password	Off	
Default Groups	Normal	
Email Registration to Admin	Off	
Display Registration After Failure	On	
<b>Data Handler Setup</b>		How data is handled
<i>Add Form DHM Config</i>		
Type	CGI	
CGI Object	\$CGI	
Data Handlers	Email, Exists, HTML, String, Number	
Field Mappings	Number_of_swing_albums_owned, email,name	
<b>Datasource Setup</b>		Configure the database and fields displayed
Field Names	record_id, name, email, gender, favorite_band_leaders, favorite_modern_group, own_two_tones, number_of_swing_albums_owned, styles_known, comments, date_time_posted,	Corresponds to default extropa database
<i>Sample Default Widget Definitions</i>		
Display Name	Country	Name that appears in the browser
Type	Textfield, textarea, scrolling_list, checkbox_group, radio_group, checkbox, popup_menu	
Name	Fname	Internal field name
Size	30	Display size in characters
Maxlength	80	Maximum number of characters permitted
Rows	6	Initial height of textarea
Cols	30	Initial width of textarea
Linebreak	1	
Multiple	1	
Values	Count Basie, Duke Ellington, Bill Elliot	
Wrap	VIRTUAL	Wrapping of text in textarea
<i>Basic Datasource Config Params</i>		
Type	File	Configure datasource
File	\$APP_DATAFILES_DIRECTORY/\$APP_NAME.dat	
Field Delimiter	(pipe)	
Comment Prefix	#	Ignore lines starting with

		#
Create File if None Exists	On	
Field Names	\@DATASOURCE_FIELD_NAMES	
Key Fields	['record_id']	Not required if key is not used
Field Types	Record_id => 'Autoincrement'	Specify a specific kind of field
<b>Mailer Setup</b>		Required for regular email. Not the same as Auth Mailer
<i>Mail Config Params</i>		
Type	Sendmail	
<i>Email Display Fields</i>	name, email, gender, favorite_band_leaders, favorite_modern_group, own_two_tones, number_of_swing_albums_owned, comments, styles_known,	Email these fields
<i>Delete Event Mail Send</i>		Warns Someone of Deletions to the database
From	you@yourdomain.com	
To	you@yourdomain.com	
Reply To	you@yourdomain.com	
Subject	Survey Delete	
<i>Add Event Mail Send</i>		Tells user of additions
From	you@yourdomain.com	
To	you@yourdomain.com	
Reply To	you@yourdomain.com	
Subject	Survey Addition	
<i>Modify Event Mail Send</i>		Tells user of modifications to records
From	you@yourdomain.com	
To	you@yourdomain.com	
Reply To	you@yourdomain.com	
Subject	Survey Modification	
<b>Logging Setup</b>		
Type	File	
Log File	\$APP_DATAFILES_DIRECTORY/\$APP_NAME.log	
Log Entry Suffix	' ' . _generateEnvVarsString() . ' ',	
Log Entry Prefix	'Survey '	
<b>View Setup</b>		Views to use, display, and defaults
<i>Valid Views</i>	CSSView, AddAcknowledgementView, AddRecordConfirmationView, DeleteRecordConfirmationView, DeleteAcknowledgementView, ModifyAcknowledgementView, ModifyRecordConfirmationView, SessionTimeoutErrorView, AddRecordView, PowerSearchFormView, BasicDataView, DetailsRecordView, ModifyRecordView, LogoffView, OptionsView	The program cannot display views that are not available here.
<i>View Display Params</i>		Defaults for Views
Application Logo	logo.gif	

Application Logo Height	40	
Application Logo Width	353	
Application Logo ALT	WebDB Demo	
Color for Even Rows	E5E5E5	
Color for Odd Rows	FFFFFF	
Display Fields		
Table BG Color 1	6699CC	
Table BG Color 2	E5E5E5	
Table BG Font Color1	BLACK	
Table BG Font Color2	BLACK	
<b>Filter Setup</b>		
<i>HTMLIZE Filter</i>		
Type	HTMLize	
Convert Double Linebreak to P	On	
Convert Linebreak to BR	On	
<i>Charset Filter</i>		
Type	CharSet	
<i>Embed Filter</i>		
Type	Embed	
Enable	Off	
<b>Action/Workflow Setup</b>		
<i>Action Handler List</i>	Defaults	User should not need to modify
<i>Action Handler Action Params</i>		
Action Handler List	\@ACTION_HANDLER_LIST	
Add Acknowledgment View Name	AddAcknowledgementView	
Add Email Body View	AddEventEmailView	
Add Form View Name	AddRecordView	
Allow Additions Flag	On	
Allow Deletions Flag	On	
Allow Duplicate Entries	Off	
Allow Username Fields to be Searched	On	
Allow Modifications Flag	On	
Application Sub Menu View Name	ApplicationSubMenuView	
Options Form View Name	OptionsView	
Auth Manager Config Params	\@AUTH_MANAGER_CONFIG_PARAMS	
Add Record Confirmation View Name	AddRecordConfirmationView	
Basic Data View Name	BasicDataView	
CGI Object	\$CGI	
CSS View URL	\$CSS_VIEW_URL	For speed, change CSS URL to a location outside the CGI directory.
CSS View Name	CSSView	



Datasource Config Params	\@DATASOURCE_CONFIG_PARAMS	
Delete Acknowledgment View	DeleteAcknowledgementView	
Delete Record Confirmation View	DeleteRecordConfirmationView	
Records Per Page Options	[5, 10, 25, 50, 100]	Remove or change numbers as desired. This appears under Options.
Max Records Per Page	\$CGI->param('records_per_page')    5	
Sort Field 1	\$CGI->param('sort_field1')    'category'	Sort by which field?
Sort Field 2	\$CGI->param('sort_field2')    'fname'	Sort by which field?
Sort Direction	\$CGI->param('sort_direction')    'ASC'	ASC=Ascending, DSC=Descending
Delete Form View Name	BasicDataView	
Delete Email Body View	DeleteEventEmailView	
Details View Name	DetailsRecordView	
Data Handler Manager Config Param	\@DATA_HANDLER_MANAGER_CONFIG_PARAMS	
Display Acknowledgement On Add	On	
Display Acknowledgement On Delete	On	
Display Acknowledgement On Modify	On	
Display Confirmation On Add	On	
Display Confirmation On Delete	On	
Display Confirmation On Modify	On	
Enable Sorting	On	
Hidden Admin Fields View	HiddenAdminFieldsView	
Input Widget Definitions	\@INPUT_WIDGET_DEFINITIONS	
Key Field	record_id	
Logoff View	LogoffView	
URL Encoded Admin Fields View	URLEncodedAdminFieldsView	
Log Config Params	ModifyAcknowledgementView	
Modify Acknowledgment View	ModifyRecordConfirmationView	
Mail Config Params	\@MAIL_CONFIG_PARAMS	
Modify Form View	ModifyRecordView	
Modify Email Body View	ModifyEventEmailView	
Power Search View	PowerSearchFormView	

Require Auth to Search	Off	Is authorization required for the action?
Require Auth for Add	On	Is authorization required for the action?
Require Auth for Modify	On	Is authorization required for the action?
Require Auth for Delete	On	Is authorization required for the action?
Require Auth for Details	Off	Is authorization required for the action?
Require Matching Username for Modify	Off	Is a matching group or username required for the action on that record?
Require Matching Group for Modify	Off	Is a matching group or username required for the action on that record?
Require Matching Username for Delete	Off	Is a matching group or username required for the action on that record?
Require Matching Group for Delete	Off	Is a matching group or username required for the action on that record?
Require Matching Username for Search	Off	Is a matching group or username required for the action on that record?
Require Matching Group for Search	Off	Is a matching group or username required for the action on that record?
Send Email on Delete	Off	
Send Email on Modify	Off	
Send Email on Add	Off	
Session Object	\$SESSION	
Session Timeout View	SessionTimeoutErrorView	
Templates Cache Directory	\$TEMPLATES_CACHE_DIRECTORY	
Valid Views	\@VALID_VIEWS	
View Display Params	\@VIEW_DISPLAY_PARAMS	
View Filters Config Params	\@VIEW_FILTERS_CONFIG_PARAMS	
View Loader	\$VIEW_LOADER	
Simple Search String	\$CGI->param('simple_search_string')    ""	
First Record on Page	\$CGI->param('first_record_to_display')    0	
Last Record on Page	\$CGI->param('first_record_to_display')    "0"	
Page Top View	PageTopView	
Page Bottom View	PageBottomView	
Action Handler Plugins	\%ACTION_HANDLER_PLUGINS,	
Basic Input Widget Display COLSPAN	2	

# 3 Functional Requirements

## 3.1 Survey Application

### 3.1.1 Description

The following definitions only cover the Default settings and views.

#### Authentication Definition Views

The application will allow any user read-only rights to view the records registered in the application. Only registered users however, may add, modify, and delete records. There is no capacity for multiple group definitions, thus the default group is "Normal" and cannot be changed.

Default Settings Permit:

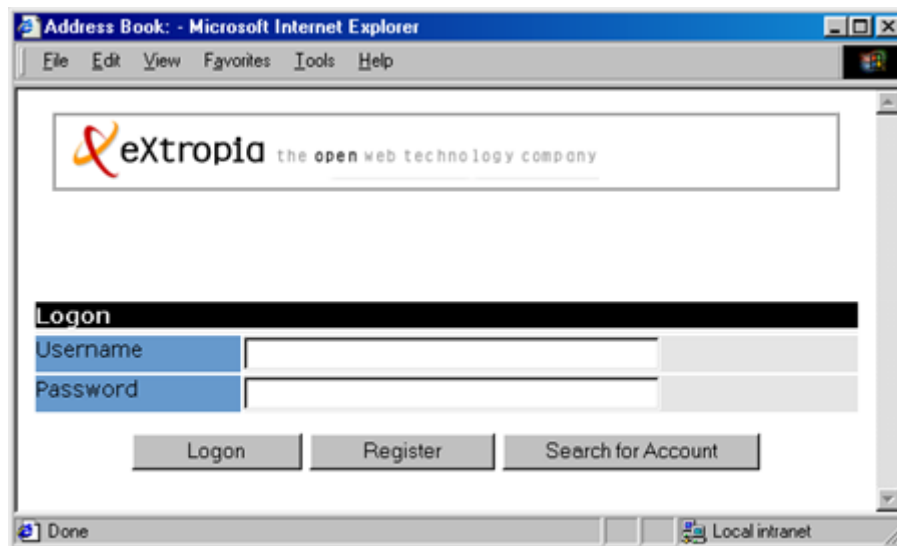
- Any user may view the database
- Any user may search the database
- Registered users may add, modify, and delete records
- Registration is available to anyone

Registration of normal users is simply done by pressing "Logon" and following the Registration Views. User data is written to the datasource. In the default installation, it is written to `Datafiles/Survey/survey.users.dat`. It is recommended that administrators do not alter the contents, especially the encrypted passwords. The information is listed as:

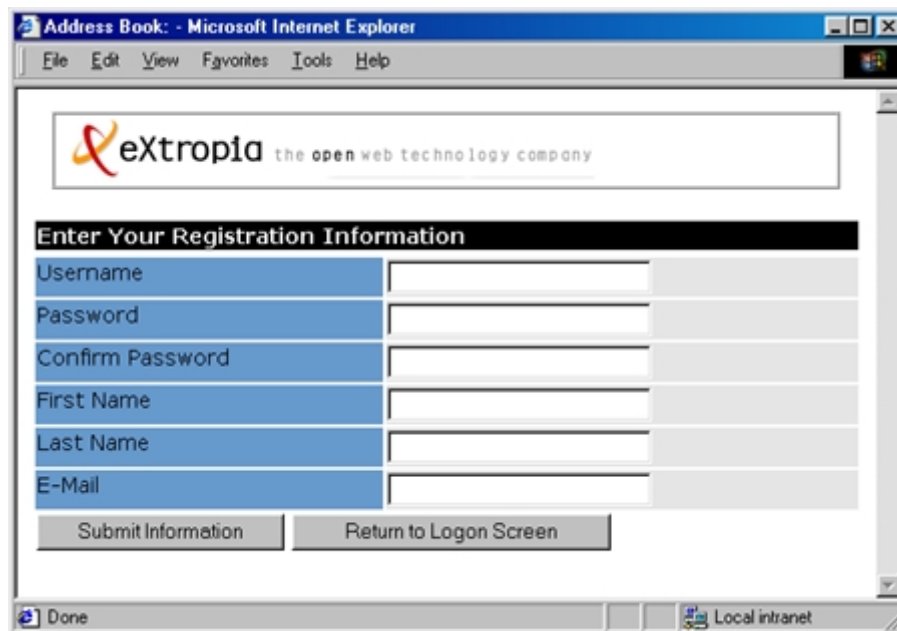
username | password | group\_name | fname | lname | email

Registration of Administrative users may be done at a later date. System administrators will be able to alter hard data in databases or flatfiles as needed.

- **Logon View** requests the Username and Password of registered users. Users may attempt to logon, Register, or Search for Account. Also the view for failed logins.

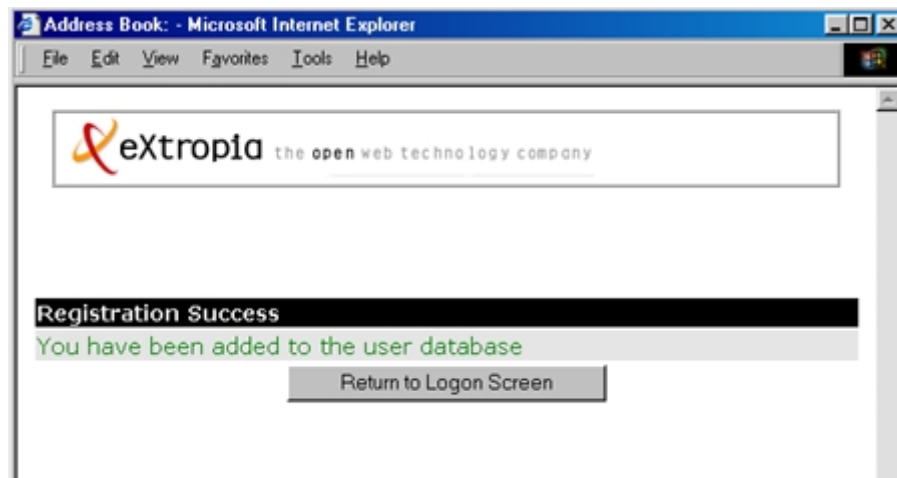


- **Register View** permits any user to enter Username, Password, Confirm, Password, First Name, Last Name, and E-Mail. The user may then Register or Return to Logon Screen.



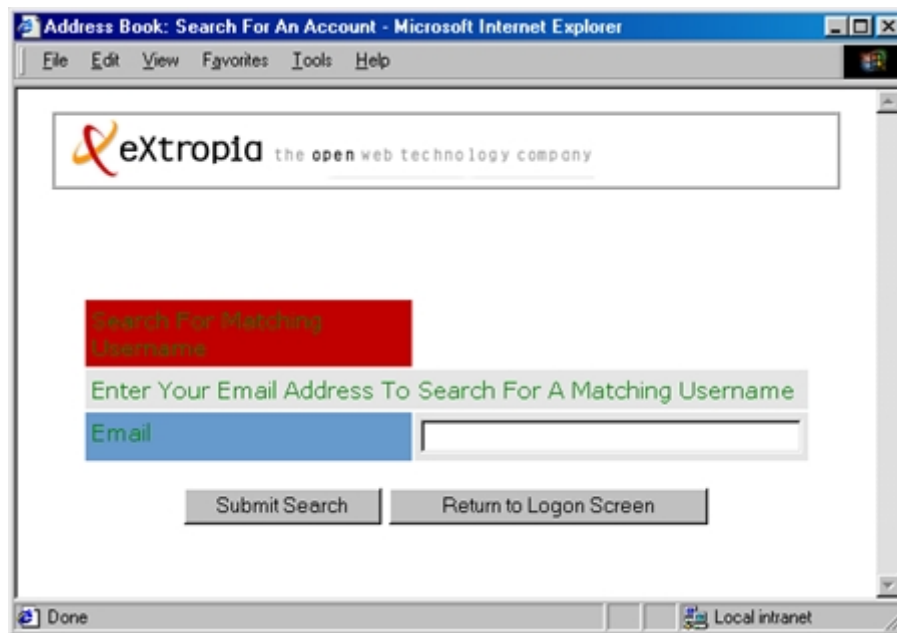
The screenshot shows a web browser window titled "Address Book: - Microsoft Internet Explorer". The browser's menu bar includes "File", "Edit", "View", "Favorites", "Tools", and "Help". The main content area features the eXtropa logo and tagline "the open web technology company". Below this is a section titled "Enter Your Registration Information" with a black header. The registration form consists of six input fields: "Username", "Password", "Confirm Password", "First Name", "Last Name", and "E-Mail". Each field has a blue label and a white input box. At the bottom of the form are two buttons: "Submit Information" and "Return to Logon Screen". The browser's status bar at the bottom shows "Done" and "Local intranet".

- **Register Confirmation View** confirms registration and returns the user to the Logon View.

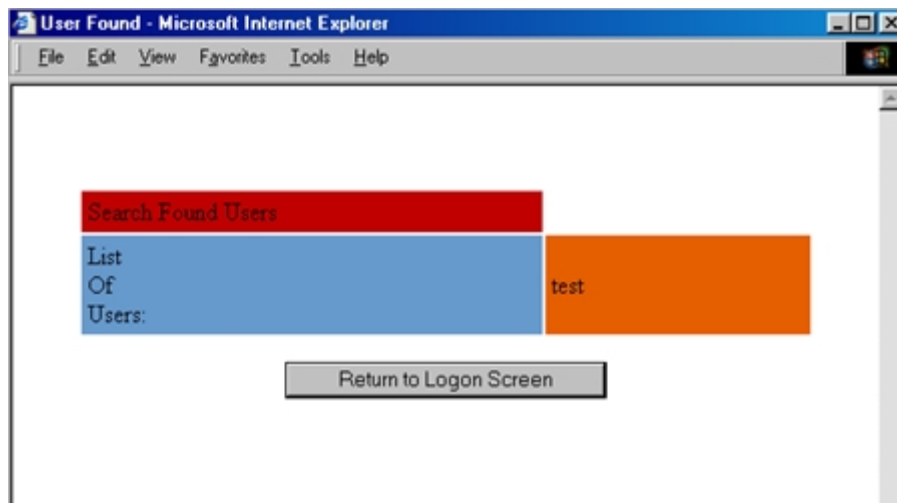


The screenshot shows a web browser window titled "Address Book: - Microsoft Internet Explorer". The browser's menu bar includes "File", "Edit", "View", "Favorites", "Tools", and "Help". The main content area features the eXtropa logo and tagline "the open web technology company". Below this is a section titled "Registration Success" with a black header. The confirmation message "You have been added to the user database" is displayed in green text. At the bottom of the section is a button labeled "Return to Logon Screen". The browser's status bar at the bottom shows "Done" and "Local intranet".

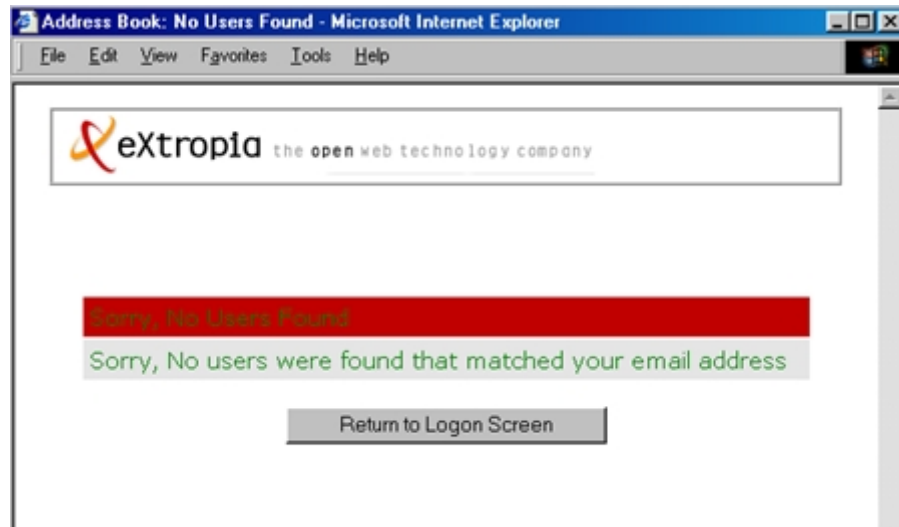
- **Search for Account** requests an email to match users and then sends the password to the user.



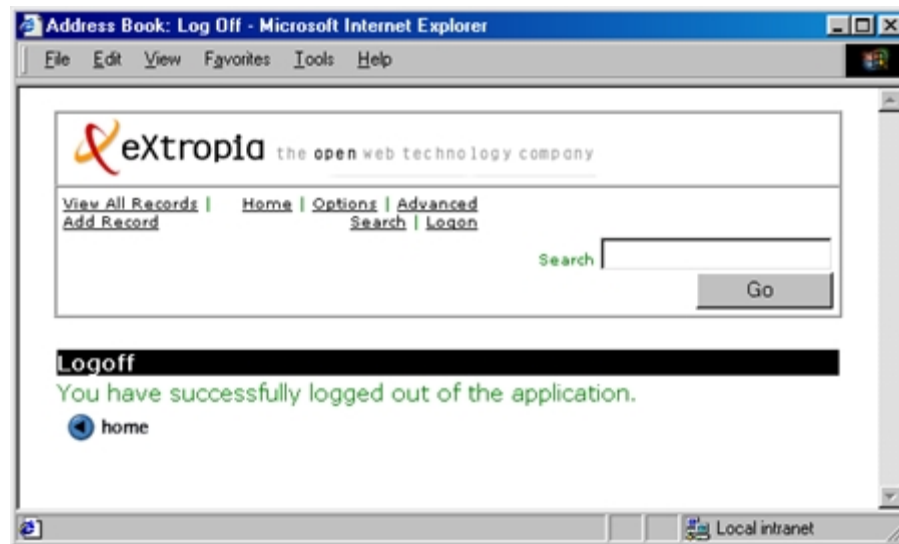
- **Search for Account Users Found** displays the username that matches the email address given.



- **Search for Users No Results** appears when no email address is associated with a username.

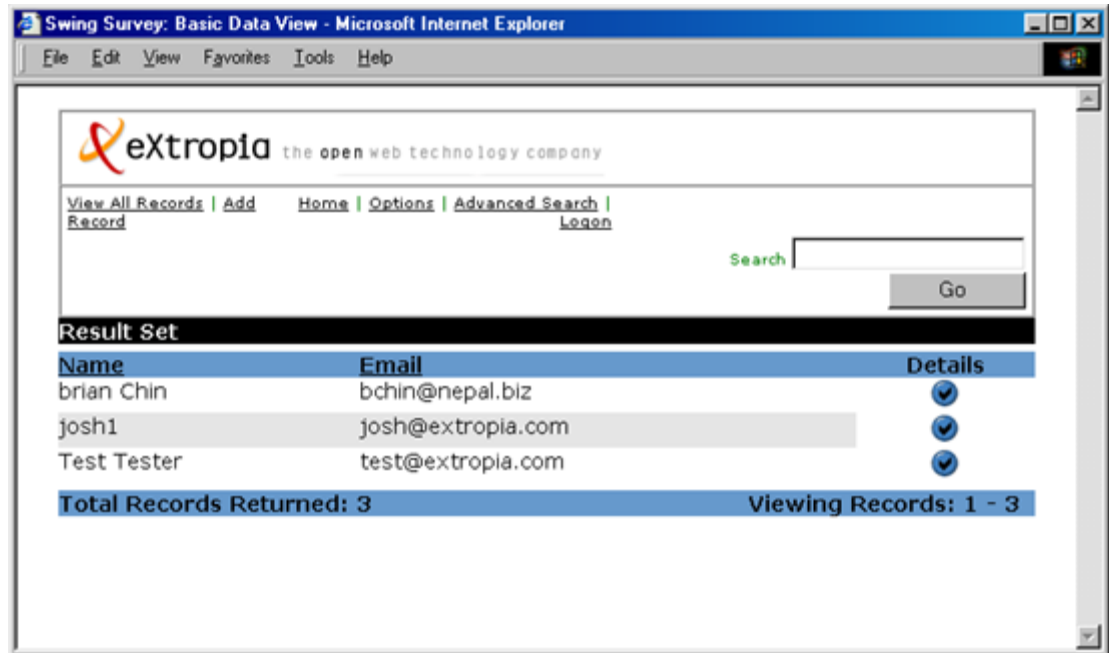


- **Logoff View** logs the user out and confirms the logoff. The session is terminated.



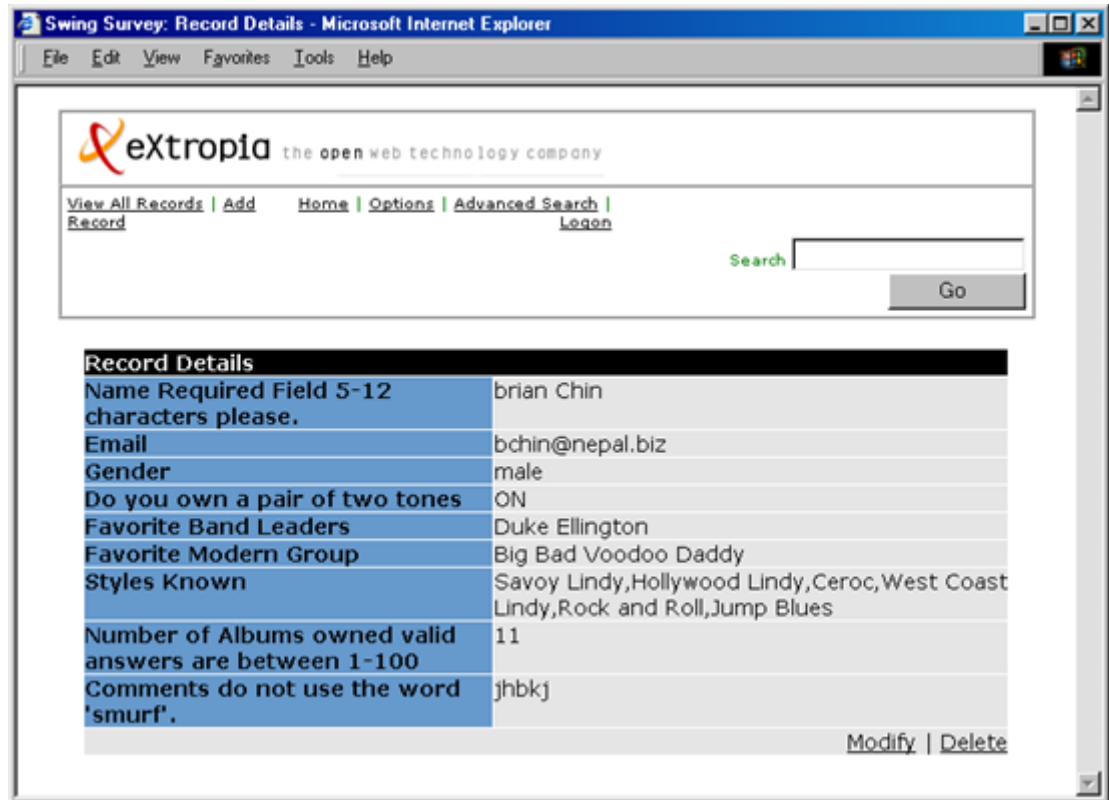
**Application Specific View Definitions**

- **Home View (Basic Data View)** displays a listing of the first 25 records in the database. The list is ranked by Name and Email. Users may view record Details. View All Records, View My Records, Options, Advanced Search, Keyword Search, and Logoff are available options.



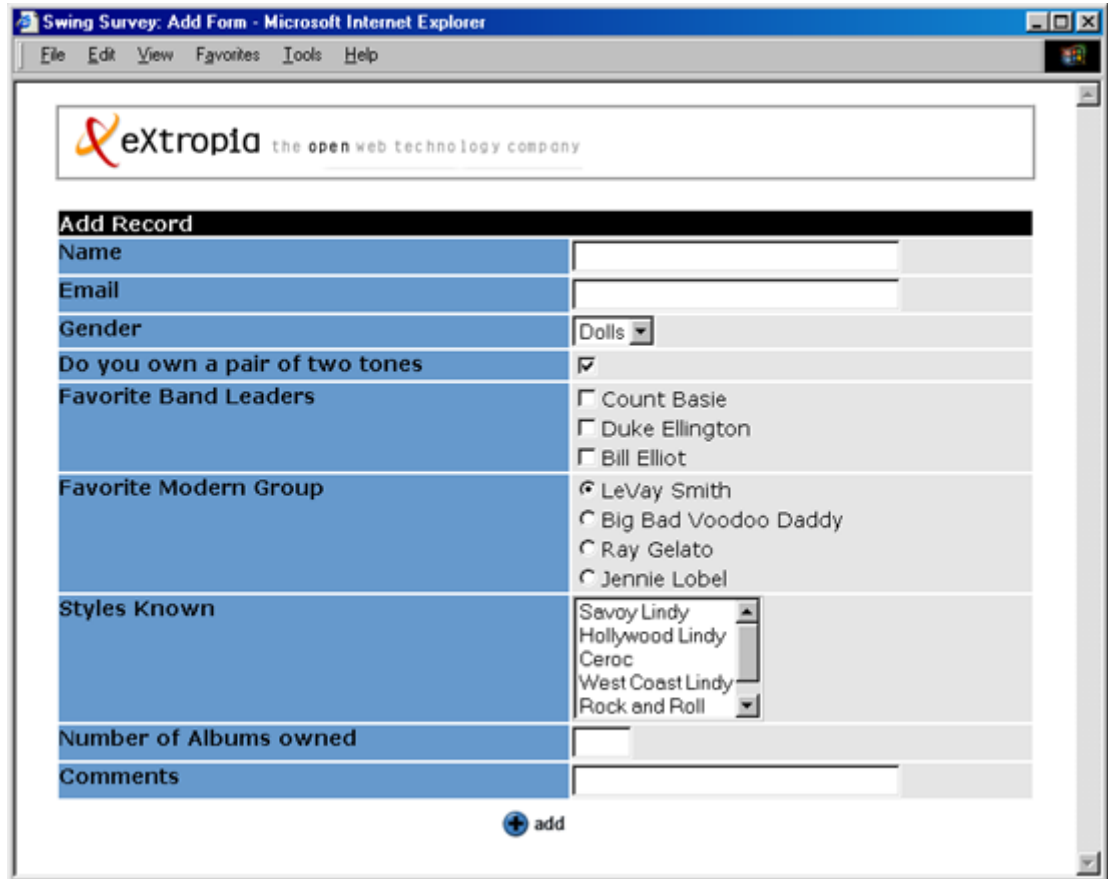
- **View All Records** will show all the information in the database ranked by First Name of the record in the address list.
- **View My Records** – allows a registered user to search within the subset of all records that were added by that user.

- **Details View** displays the entire contents of a record. This view permits Modify and Delete with authentication.





- **Add Record** requires login authentication. The fields are the same as in the Survey.



Swing Survey: Add Form - Microsoft Internet Explorer

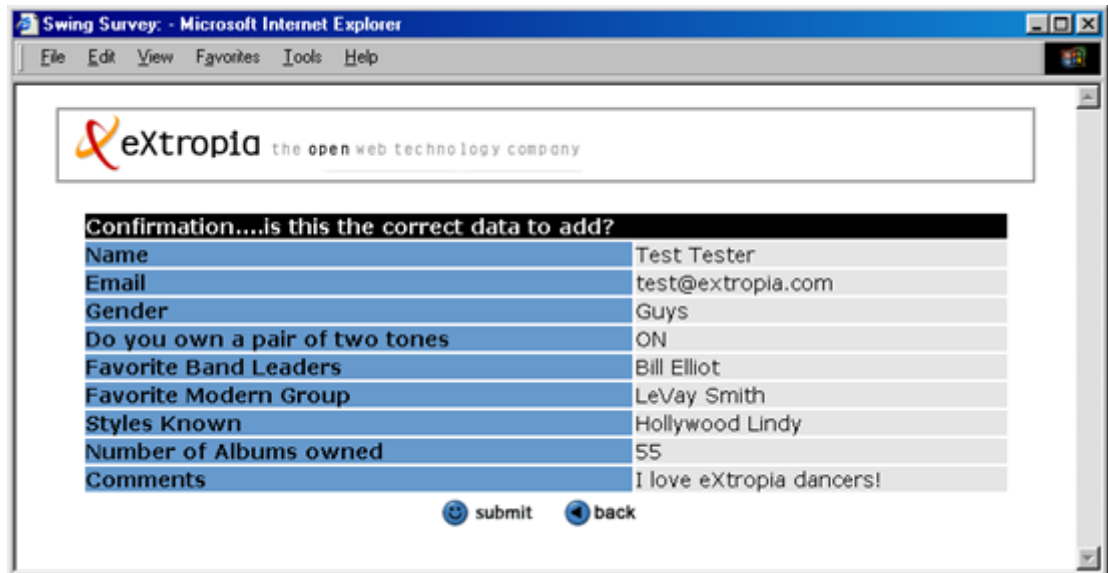
File Edit View Favorites Tools Help

**eXtropa** the open web technology company

**Add Record**

Name	<input type="text"/>
Email	<input type="text"/>
Gender	<input type="text" value="Dolls"/>
Do you own a pair of two tones	<input checked="" type="checkbox"/>
Favorite Band Leaders	<input type="checkbox"/> Count Basie <input type="checkbox"/> Duke Ellington <input type="checkbox"/> Bill Elliot
Favorite Modern Group	<input checked="" type="radio"/> LeVay Smith <input type="radio"/> Big Bad Voodoo Daddy <input type="radio"/> Ray Gelato <input type="radio"/> Jennie Lobel
Styles Known	<input type="text" value="Savoy Lindy"/> <input type="text" value="Hollywood Lindy"/> <input type="text" value="Cerc"/> <input type="text" value="West Coast Lindy"/> <input type="text" value="Rock and Roll"/>
Number of Albums owned	<input type="text"/>
Comments	<input type="text"/>

- **Delete Record** requires authentication. It will ask the user to confirm.
- **Modify Record** requires authentication. It contains the same fields as Add Record.
- **Confirmation View** displays the user's answers to confirm. The user may continue or return to edit his answers.



Swing Survey: - Microsoft Internet Explorer

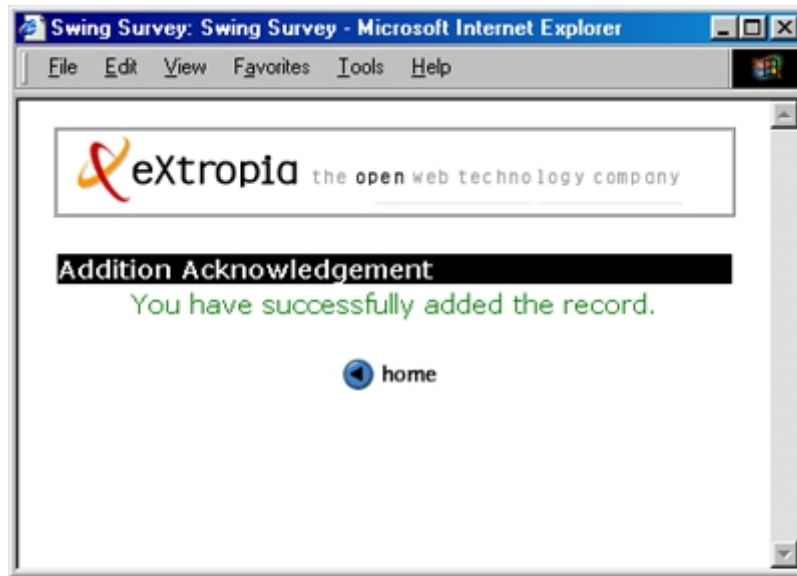
File Edit View Favorites Tools Help

**eXtropa** the open web technology company

**Confirmation....is this the correct data to add?**

Name	Test Tester
Email	test@extropa.com
Gender	Guys
Do you own a pair of two tones	ON
Favorite Band Leaders	Bill Elliot
Favorite Modern Group	LeVay Smith
Styles Known	Hollywood Lindy
Number of Albums owned	55
Comments	I love eXtropa dancers!

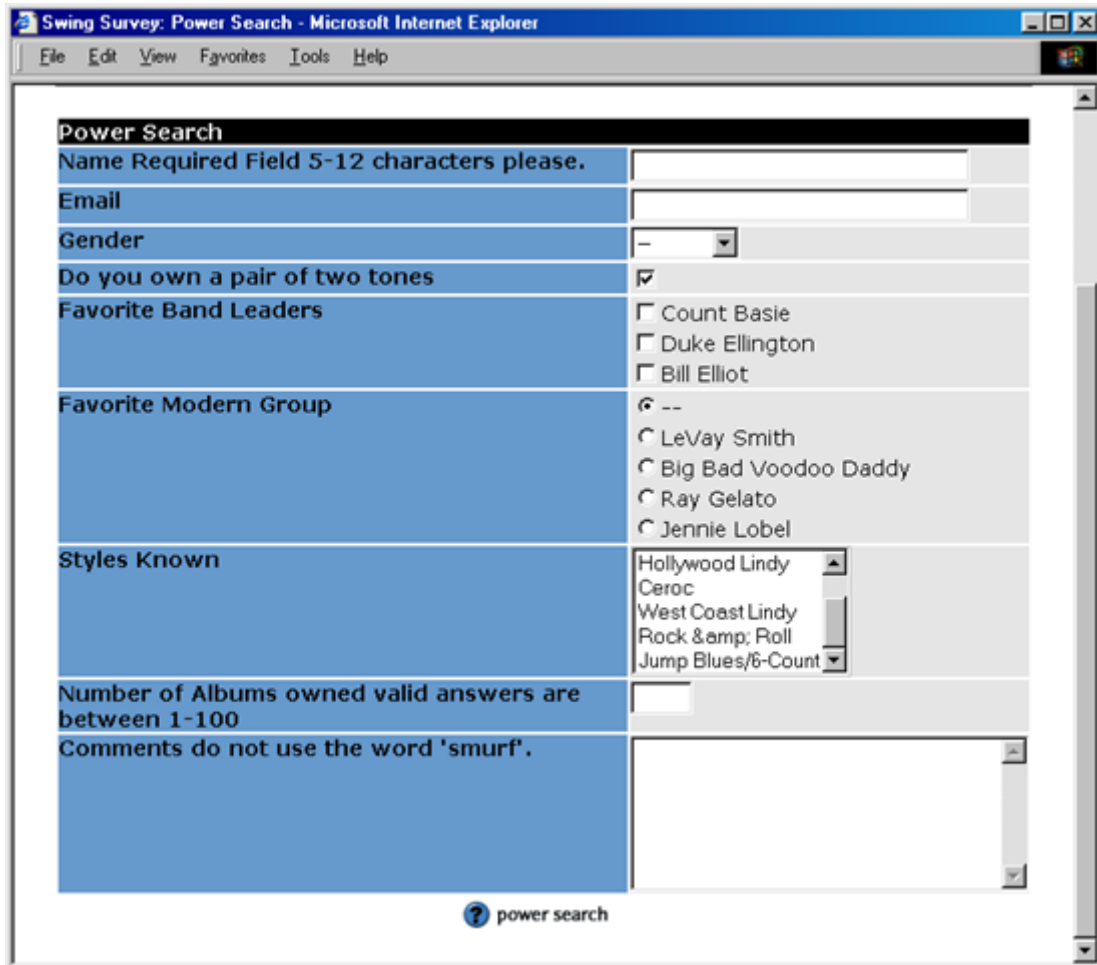
- **Acknowledgement View** reports the success of the entry.



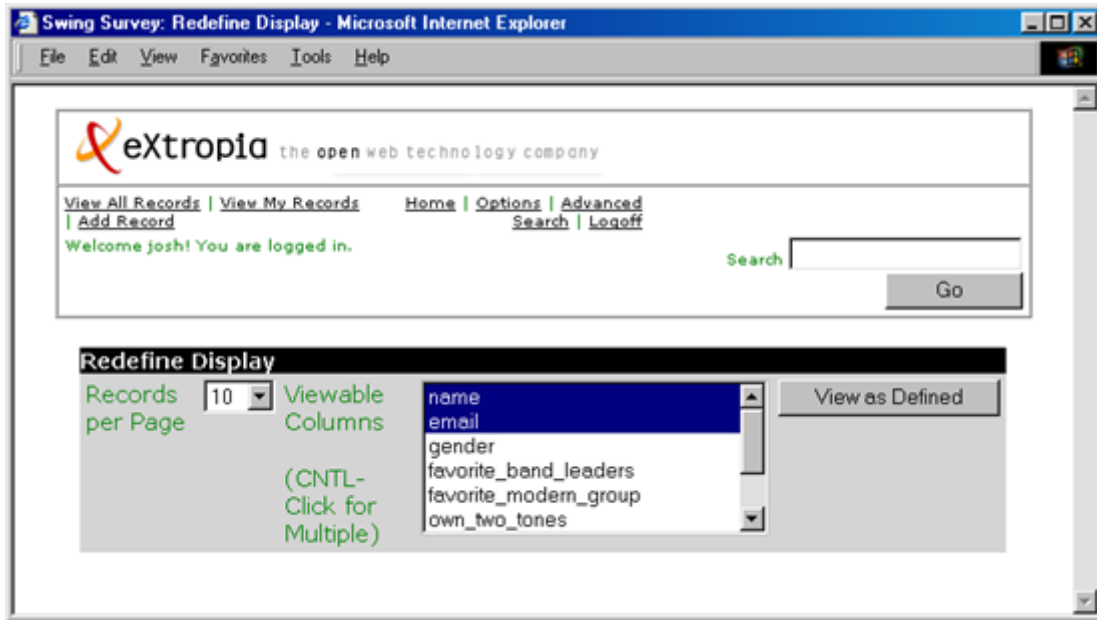
#### **Common Features Definitions**

- **Basic Search** permits any user to search the database based upon keywords. Available in the header.

- **Advanced Search** permits any user to search the database for any or all of the available fields



- **Options View** permits the authenticated user to alter Records Displayed per Page, Two Sort Fields, and which Columns to View. Upon pressing View as Defined, the user will see the records as desired. The Viewable Columns will vary according to Application.



### 3.1.2 Risks and Dependencies

There is a risk that the Administrator will delete records he wants to keep. The design of survey also makes it difficult to tally results in a meaningful fashion.

## 4 Database Design

### 4.1 Description

The data of the application will be stored in a flat file. Each data fields of a record will be separated by '|'.

Field Name	Description	Field Types
record_id	Record Value (Auto Incremental)	Auto
name	Name	char
email	Email	char
gender	Gender	Char
favorite_band_leaders	Question 1	Char
favorite_modern_group	Question 2	Char
own_two_tones	Question 3	Char
number_of_swing_albums_owned	Question 4	char
styles_known	Question 5	Char
comments	Comments	Char
date_time_posted	Date and Time Posted	date

## 4.2 Communications Interfaces

# 5 Other non-functional attributes

## 5.1 Reliability

Highly reliable in a properly secured environment.

## 5.2 Maintainability

Requires little maintenance. Owners will want to clear out a large flat file now and then as well as ensure their installation is secure from hackers. Users of relational databases will probably not need to clear out their database.

## 5.3 Portability

Portability is limited by the choice of database.

## 5.4 Extensibility

Information entered is portable to any relational database. The program can easily be switched to a new database with just a few lines of code. The program relies on the eXtropa ADT that divorces form and function.

## 5.5 Reusability

Survey is highly reusable. The application can be modified for just about anything!

## 5.6 Serviceability