

# ADT: Mailing List Manager Version 1.0

Functional Specification

|                |                    |
|----------------|--------------------|
| <b>Author</b>  | Josh Hill          |
| <b>Version</b> | 1.0                |
| <b>Printed</b> | 2001-10-22 1:32 PM |

## Document Revisions

Revisions on this document should be recorded in the table below:

|   | <b>Date</b>       | <b>Description</b>                | <b>Author</b> |
|---|-------------------|-----------------------------------|---------------|
| 1 | 22 October 2001   | First Draft                       | Josh Hill     |
| 2 | 10 September 2001 | First Edit                        | Josh Hill     |
| 3 | 12 October 2001   | Screenshots, Params, Views, Edits | Josh Hill     |
| 4 |                   |                                   |               |

|   |           |    |
|---|-----------|----|
| <b>1 Introduction</b>                     | <b>4</b>  |    |
| 1.1 Purpose of this document              |           | 4  |
| 1.2 Scope of this document                |           | 4  |
| 1.3 Overview                              |           | 4  |
| 1.4 Business Context                      |           | 4  |
| <b>2 General Description</b>              | <b>4</b>  |    |
| 2.1 Product Functions                     |           | 4  |
| 2.2 General Constraints                   |           | 4  |
| <b>3 Functional Requirements</b>          | <b>11</b> |    |
| 3.1 MLM Application                       |           | 11 |
| 3.1.1 <i>Description</i> .....            |           | 11 |
| 3.1.2 <i>Risks and Dependencies</i> ..... |           | 18 |
| <b>4 Database Design</b>                  | <b>18</b> |    |
| 4.1 Description                           |           | 18 |
| 4.2 Communications Interfaces             |           | 19 |
| <b>5 Other non-functional attributes</b>  | <b>19</b> |    |
| 5.1 Reliability                           |           | 19 |
| 5.2 Maintainability                       |           | 19 |
| 5.3 Portability                           |           | 19 |
| 5.4 Extensibility                         |           | 19 |
| 5.5 Reusability                           |           | 19 |
| 5.6 Serviceability                        |           | 19 |

# 1 Introduction

## 1.1 Purpose of this document

The purpose of this document is to specify the functional and system specification of the Mailing List Manager application. The document provides a road-map through which the implementation of the application will be developed and where applicable, will also contain information detailing technical design constraints and assumptions.

## 1.2 Scope of this document

The scope of this specification covers the functional specifications of the Web Mailing List Manager application. This specification does not extend to third party or infrastructure components (such as a web server installation and/or configuration) .

## 1.3 Overview

The basic requirements summary build-in for the MLM application:

- To be able to add, delete, and modify users of the list.
- To be able to send mail to the list.

## 1.4 Business Context

MLM is a groupware application designed for multiple users over a wide area. The generic version is open source for distribution. Anyone may take advantage of the powerful eXtropa Perl ADT. Improvements will be made incrementally as bug reports come in and suggestions are made. The generic MLM will ultimately benefit both the company and our users.

# 2 General Description

## 2.1 Product Functions

MLM is a wide area application capable of use by everyone. A user should be able to act only on his own record in order to best manage his own needs. Regular users may submit email to the list, but it must be approved by an administrator.

## 2.2 General Constraints

The application will be written in Perl and the data files are stored in a common flatfile system (ASCII File). This will slow down in terms of searching for information if there is a presence of huge database.

The application is also able to interface with relational databases should the administrator desire it.

**Bold Params** indicate Section Headings. *Italic Params* are objects.

Indented Params are configurable variables.

Grayed out or missing items are not required or not available in the default configuration.

| Param                               | Default configuration  | Notes  |
|-------------------------------------|--|--|
| <b>Language</b>                     | Perl   |  |
| <b>Session Setup</b>                |  |  |
| Type                                | File   | Note that flatfile data sources are slow. We recommend upgrading to a database based data source |
| Max Modify Time                     | 1 hour   |  |
| Fatal Timeout                       | Off  |  |
| Fatal if session not found          | Off  |  |
| <i>Session Manager Setup</i>        |  |  |
| Type                                | FormVar  |  |
| Cgi Object                          | \$CGI  |  |
| Session Params                      | Session Config Params  |  |
| <b>Authentication Setup</b>         |  | For the datasource   |
| Type                                | File   |  |
| Field Delimeter                     | (pipe)   |  |
| Create a file if none exists        | On   |  |
| Field Names                         | From Auth User Datasource  |  |
| File                                | Scriptname.users.dat   | Path is set at start of script   |
| Default Authentication Fields       | Username, password, groups, firstname, lastname, email                               |  |
| <b>Authentication Manager Setup</b> |  | How requests are processed   |
| Color for even rows                 | E5E5E5   |  |
| Color for Odd Rows                  | FFFFFF   |  |
| CSS View URL                        | \$CSS_VIEW_URL   |  |
| Application Logo                    | logo.gif   |  |
| Application Logo Height             | 40   |  |
| Application Logo Width              | 353  |  |
| Application Logo ALT                | WebDB Demo   |  |
| HTTP Header Params                  | [-EXPIRES => '-1d']  |  |
| Document Root URL                   | '/' or web root directory  |  |
| Image Root URL                      | /Images/Extropa  |  |
| Script Display Name                 | 'MLM'  |  |
| Script Name                         | \$CGI->script_name()   |  |
| Page Top View                       | PageTopView  |  |
| Page Bottom View                    | PageBottomView   |  |
| Link Target                         | '_self' or current window  |  |
| <i>User_Fields</i>                  | Auth_username, auth_password, auth_groups, auth_firstname, auth_lastname, auth_email |  |
| <i>Mail Params</i>                  |  |  |
| Type                                | Sendmail   | Default on most systems  |
| <i>User Mail Send Params</i>        |  |  |
| From                                | you@yourdomain.com   |  |

|  |   |   |
|--|---|---|
| Subject                                  | Password Generated  |   |
| <i>Admin Mail Send Params</i>            |   |   |
| From                                     | you@yourdomain.com  |   |
| To                                       | you@yourdomain.com  |   |
| Subject                                  | Registration Notification   |   |
| <i>Auth Manager Config Params</i>        |   |   |
| Type                                     | CGI   |   |
| Allow Registration                       | On  |   |
| Allow User Search                        | On  | Allow anyone to check for an old account.   |
| Generate Password                        | Off   |   |
| Default Groups                           | Normal  |   |
| Email Registration to Admin              | Off   |   |
| Display Registration After Failure       | On  |   |
| <b>Data Handler Setup</b>                |   | How data is handled                         |
| <i>Add Form DHM Config</i>               |   |   |
| Type                                     | CGI   |   |
| CGI Object                               | \$CGI   |   |
| Data Handlers                            | Email, Exists, HTML, Number, String   |   |
| Field Mappings                           | Subject, abstract, full_text  |   |
| <b>Datasource Setup</b>                  |   | Configure the database and fields displayed |
| Field Names                              | record_id, fname, lname, email, gender, age, occupation, username_of_poster, group_of_poster, date_time_posted, email | Corresponds to default extropa database     |
| <i>Fields Required for Deletion</i>      |   |   |
| <i>Sample Default Widget Definitions</i> |   |   |
|  |   | Configure field types for TTML              |
| Display Name                             | Country   | Name that appears in the browser            |
| Type                                     | Textfield, textarea, popup_menu   |   |
| Name                                     | Fname   | Internal field name                         |
| Size                                     | 30  | Display size in characters                  |
| Maxlength                                | 80  | Maximum number of characters permitted      |
| Rows                                     | 6   | Initial height of textarea                  |
| Cols                                     | 30  | Initial width of textarea                   |
| Wrap                                     | VIRTUAL   | Wrapping of text in textarea                |
| <i>Basic Datasource Config Params</i>    |   |   |
| Type                                     | File  |   |
| File                                     | \$APP_DATAFILES_DIRECTORY/\$APP_NAME.dat  |   |
| Field Delimiter                          | (pipe)  |   |
| Comment Prefix                           | #   | Ignore lines starting with #                |
| Create File if None Exists               | On  |   |
| Field Names                              | \@DATASOURCE_FIELD_NAMES  |   |
| Key Fields                               | ['record_id']   | Not required if key is not used             |

|                               |   |   |
|-------------------------------|---|---|
| Field Types                   | Record_id => 'Autoincrement'  | Specify a specific kind of field                              |
| <b>Mailer Setup</b>           |   | Required for regular email. Not the same as Auth Mailer       |
| <i>Mail Config Params</i>     |   |   |
| Type                          | Sendmail  |   |
| <i>Email Display Fields</i>   | Fname, lname, email, gender, age, occupation  | Email these fields  |
| <i>Delete Event Mail Send</i> |   | Warns Someone of Deletions to the database                    |
| From                          | you@yourdomain.com  |   |
| To                            | you@yourdomain.com  |   |
| Reply To                      | you@yourdomain.com  |   |
| Subject                       | MLM Delete  |   |
| <i>Add Event Mail Send</i>    |   | Tells user of additions                                       |
| From                          | you@yourdomain.com  |   |
| To                            | you@yourdomain.com  |   |
| Reply To                      | you@yourdomain.com  |   |
| Subject                       | MLM Addition  |   |
| <i>Modify Event Mail Send</i> |   | Tells user of modifications to records                        |
| From                          | you@yourdomain.com  |   |
| To                            | you@yourdomain.com  |   |
| Reply To                      | you@yourdomain.com  |   |
| Subject                       | MLM Modification  |   |
| <b>Logging Setup</b>          |   |   |
| Type                          | File  |   |
| Log File                      | \$APP_DATAFILES_DIRECTORY/\$APP_NAME.log  |   |
| Log Entry Suffix              | ' ' . _generateEnvVarsString() . ' ',   |   |
| Log Entry Prefix              | 'MLM '  |   |
| <b>View Setup</b>             |   | Views to use, display, and defaults                           |
| <i>Valid Views</i>            | CSSView, DeleteAcknowledgementView, DeleteRecordConfirmationView, LogoffView, BasicDataView, MLMDetailsView, MLMFindRecordFormView, MLMSendMailAcknowledgementView, MLMSendMailFormView, MLMTOCView, DetailsRecordView, ModifyAcknowledgementView, ModifyRecordConfirmationView, ModifyRecordView, OptionsView, PowerSearchFormView, SessionTimeoutErrorView, | The program cannot display views that are not available here. |
| <i>View Display Params</i>    |   | Defaults for Views  |
| Application Logo              | logo.gif  |   |
| Application Logo Height       | 40  |   |
| Application Logo Width        | 353   |   |
| Application Logo ALT          | WebDB Demo  |   |
| Color for Even Rows           | E5E5E5  |   |
| Color for Odd Rows            | FFFFFF  |   |
| Display Fields                | Fname, lname, email, gender, age, occupation  |   |

|                                      |                              |  |
|--------------------------------------|------------------------------|--|
| Table BG Color 1                     | 6699CC                       |  |
| Table BG Color 2                     | E5E5E5                       |  |
| Table BG Font Color1                 | BLACK                        |  |
| Table BG Font Color2                 | BLACK                        |  |
| <b>Filter Setup</b>                  |                              |  |
| <i>HTMLIZE Filter</i>                |                              |  |
| Type                                 | HTMLize                      |  |
| Convert Double Linebreak to P        | On                           |  |
| Convert Linebreak to BR              | On                           |  |
| <i>Charset Filter</i>                |                              |  |
| Type                                 | CharSet                      |  |
| <i>Embed Filter</i>                  |                              |  |
| Type                                 | Embed                        |  |
| Enable                               | Off                          |  |
| <b>Action/Workflow Setup</b>         |                              |  |
| <i>Action Handler List</i>           | Defaults                     | User should not need to modify                                     |
| <i>Action Handler Action Params</i>  |                              |  |
| Action Handler List                  | \@ACTION_HANDLER_LIST        |  |
| Add Acknowledgment View Name         | AddAcknowledgementView       |  |
| Add Email Body View                  | AddEventEmailView            |  |
| Add Form View Name                   | AddRecordView                |  |
| Allow Additions Flag                 | On                           |  |
| Allow Deletions Flag                 | On                           |  |
| Allow List Mailings                  | On                           |  |
| Allow Duplicate Entries              | Off                          |  |
| Allow Username Fields to be Searched | On                           |  |
| Allow Modifications Flag             | On                           |  |
| Application Sub Menu View Name       | ApplicationSubMenuView       |  |
| Options Form View Name               | OptionsView                  |  |
| Auth Manager Config Params           | \@AUTH_MANAGER_CONFIG_PARAMS |  |
| Add Record Confirmation View Name    | AddRecordConfirmationView    |  |
| Basic Data View Name                 | MLMTOCView                   |  |
| CGI Object                           | \$CGI                        |  |
| CSS View URL                         | \$CSS_VIEW_URL               | For speed, change CSS URL to a location outside the CGI directory. |
| CSS View Name                        | CSSView                      |  |
| Datasource Config Params             | \@DATASOURCE_CONFIG_PARAMS   |  |
| Delete Acknowledgment View           | DeleteAcknowledgementView    |  |
| Delete Record Confirm View           | DeleteRecordConfirmationView |  |



|                                    |   |  |
|------------------------------------|---|--|
| Records Per Page Options           | [5, 10, 25, 50, 100]                                      | Remove or change numbers as desired. This appears under Options. |
| Max Records Per Page               | <code>\$CGI-&gt;param('records_per_page')    5</code>     |  |
| Sort Field 1                       | <code>\$CGI-&gt;param('sort_field1')    'category'</code> | Sort by which field?   |
| Sort Field 2                       | <code>\$CGI-&gt;param('sort_field2')    'fname'</code>    | Sort by which field?   |
| Sort Direction                     | <code>\$CGI-&gt;param('sort_direction')    'ASC'</code>   | ASC=Ascending, DSC=Descending                                    |
| Delete Form View Name              | BasicDataView   |  |
| Delete Email Body View             | DeleteEventEmailView                                      |  |
| Details View Name                  | DetailsRecordView   |  |
| Data Handler Manager Config Param  | <code>\@DATA_HANDLER_MANAGER_CONFIG_PARAMS</code>         |  |
| Display Acknowledgement On Add     | On  |  |
| Display Acknowledgement On Delete  | On  |  |
| Display Acknowledgement On Modify  | On  |  |
| Display Confirmation On Add        | On  |  |
| Display Confirmation On Delete     | Off   |  |
| Display Confirmation On Modify     | On  |  |
| Enable Sorting                     | Off   |  |
| Hidden Admin Fields View           | HiddenAdminFieldsView                                     |  |
| Input Widget Definitions           | <code>\@INPUT_WIDGET_DEFINITIONS</code>                   |  |
| Basic Input Widget Display COLSPAN | 2   |  |
| Key Field                          | record_id   |  |
| Logoff View                        | LogoffView  |  |
| URL Encoded Admin Fields View      | URLEncodedAdminFieldsView                                 |  |
| Log Config Params                  | ModifyAcknowledgementView                                 |  |
| Modify Acknowledgment View         | ModifyRecordConfirmationView                              |  |
| Mail Config Params                 | <code>\@MAIL_CONFIG_PARAMS</code>                         |  |
| Modify Form View                   | ModifyRecordView  |  |
| Modify Email Body View             | ModifyEventEmailView                                      |  |
| Power Search View                  | PowerSearchFormView                                       |  |
| Require Auth to Search             | Off   | Is authorization required for the action?                        |
| Require Auth for Add               | Off   | Is authorization required for the action?                        |

|                                      |  |   |
|--------------------------------------|--|---|
| Require Auth for Modify              | Off  | Is authorization required for the action?                               |
| Require Auth for Delete              | Off  | Is authorization required for the action?                               |
| Require Auth for Details             | Off  | Is authorization required for the action?                               |
| Require Auth for Sending Mail        | On   | Is a matching group or username required for the action on that record? |
| Require Matching Username for Modify | Off  | Is a matching group or username required for the action on that record? |
| Require Matching Group for Modify    | Off  | Is a matching group or username required for the action on that record? |
| Require Matching Username for Delete | Off  | Is a matching group or username required for the action on that record? |
| Require Matching Group for Delete    | Off  | Is a matching group or username required for the action on that record? |
| Require Matching Username for Search | Off  | Is a matching group or username required for the action on that record? |
| Require Matching Group for Search    | Off  | Is a matching group or username required for the action on that record? |
| Send Email on Delete                 | Off  |   |
| Send Email on Modify                 | Off  |   |
| Send Email on Add                    | Off  |   |
| Send Mail Acknowledgement View Name  | MLMSendMailAcknowledgmentView                  |   |
| Send Mail Form View Name             | MLMSendMailFormView                            |   |
| Session Object                       | \$SESSION                                      |   |
| Session Timeout View                 | SessionTimeoutErrorView                        |   |
| Templates Cache Directory            | \$TEMPLATES_CACHE_DIRECTORY                    |   |
| Valid Views                          | \@VALID_VIEWS                                  |   |
| View Display Params                  | \@VIEW_DISPLAY_PARAMS                          |   |
| View Filters Config Params           | \@VIEW_FILTERS_CONFIG_PARAMS                   |   |
| View Loader                          | \$VIEW_LOADER                                  |   |
| Simple Search String                 | \$CGI->param('simple_search_string')    ""     |   |
| First Record on Page                 | \$CGI->param('first_record_to_display')    0   |   |
| Last Record on Page                  | \$CGI->param('first_record_to_display')    "0" |   |
| Page Top View                        | PageTopView                                    |   |
| Page Bottom View                     | PageBottomView                                 |   |
| Action Handler Plugins               | \%ACTION_HANDLER_PLUGINS,                      |   |

# 3 Functional Requirements

## 3.1 MLM Application

### 3.1.1 Description

The following definitions only cover the Default settings and views.

#### Authentication Definition Views

Any user may add, modify, or delete records. It is hoped they would only alter their own records. Only registered users (who should be administrators) may Send Mail to the list. There is no capacity for multiple group definitions, thus the default group is "Normal" and cannot be changed.

Default Settings Permit:

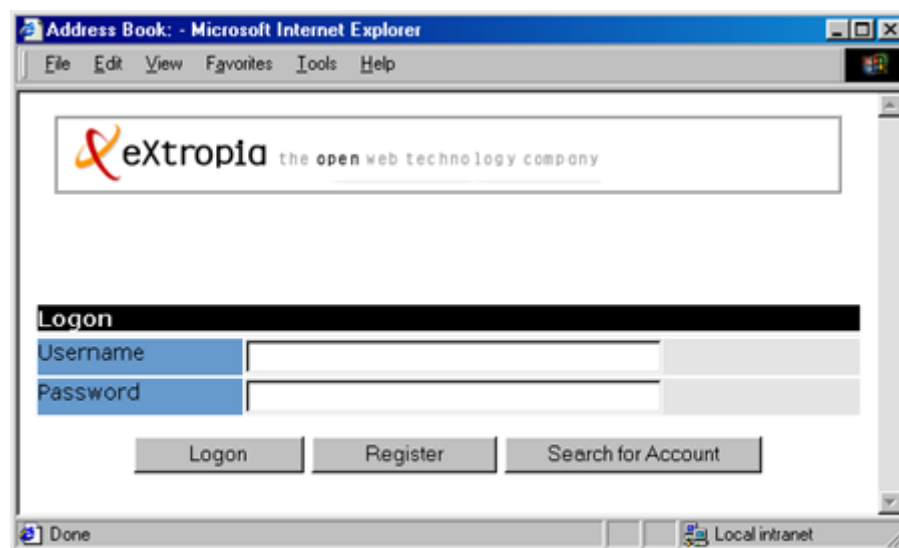
- No one may browse the database
- Any user may search the database
- Any user may look for and remove records
- Registered users may send mail to the list
- Registration is available to anyone

Registration of normal users is simply done by pressing "Logon" and following the Registration Views. User data is written to the datasource. In the default installation, it is written to `Datafiles/MLM/mlm.users.dat`. It is recommended that administrators do not alter the contents, especially the encrypted passwords. The information is listed as:

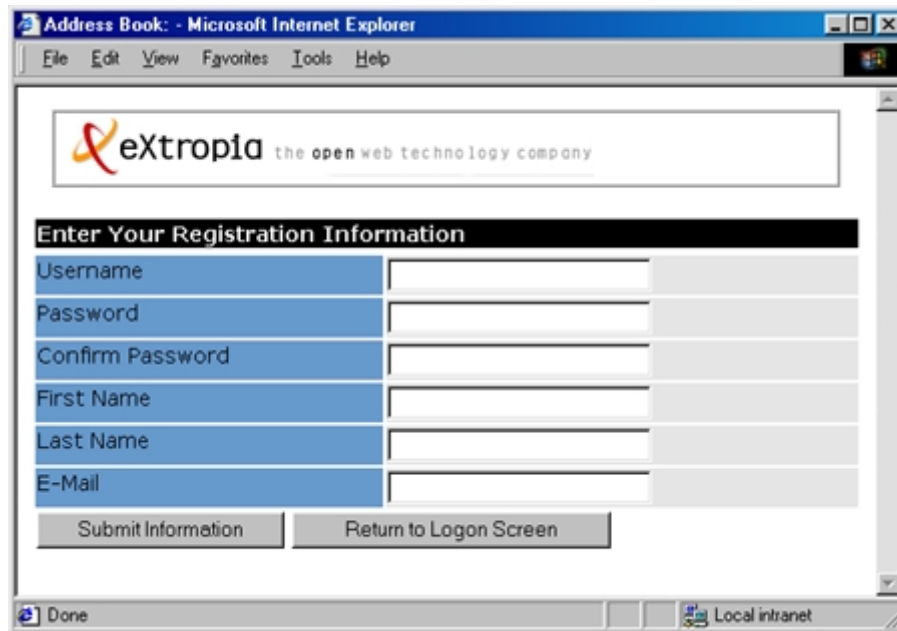
```
username | password | group_name | fname | lname | email
```

Registration of Administrative users may be done at a later date. System administrators will be able to alter hard data in databases or flatfiles as needed.

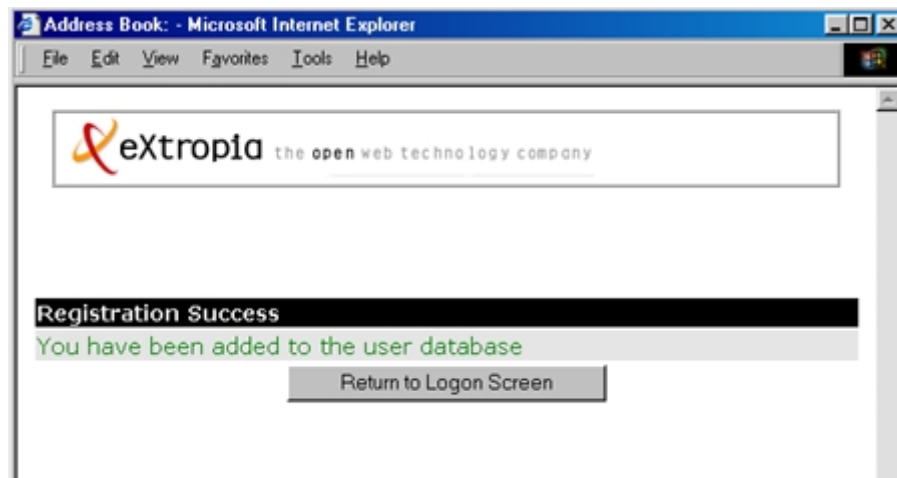
- **Logon View** requests the Username and Password of registered users. Users may attempt to logon, Register, or Search for Account. Also the view for failed logins.



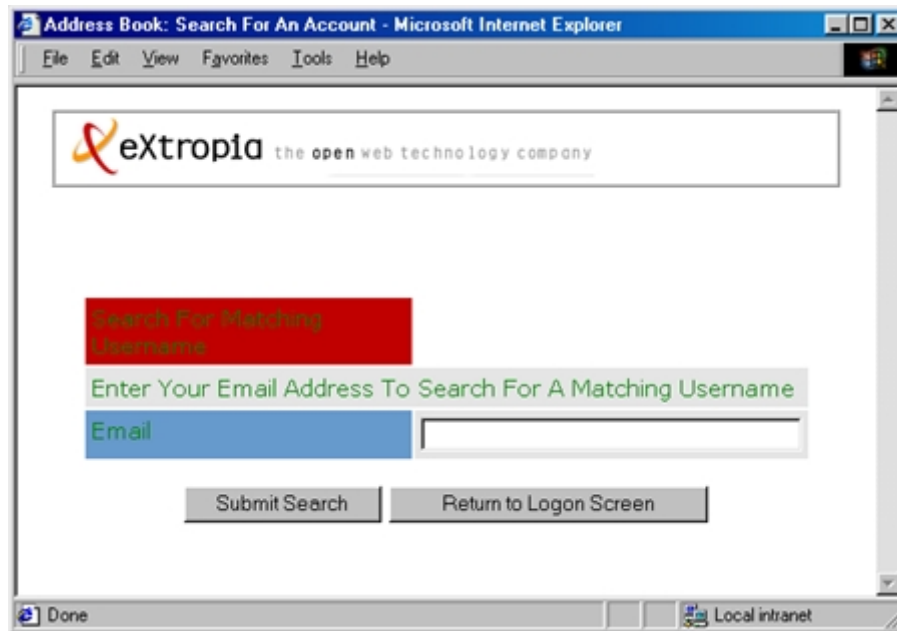
- **Register View** permits any user to enter Username, Password, Confirm, Password, First Name, Last Name, and E-Mail. The user may then Register or Return to Logon Screen.



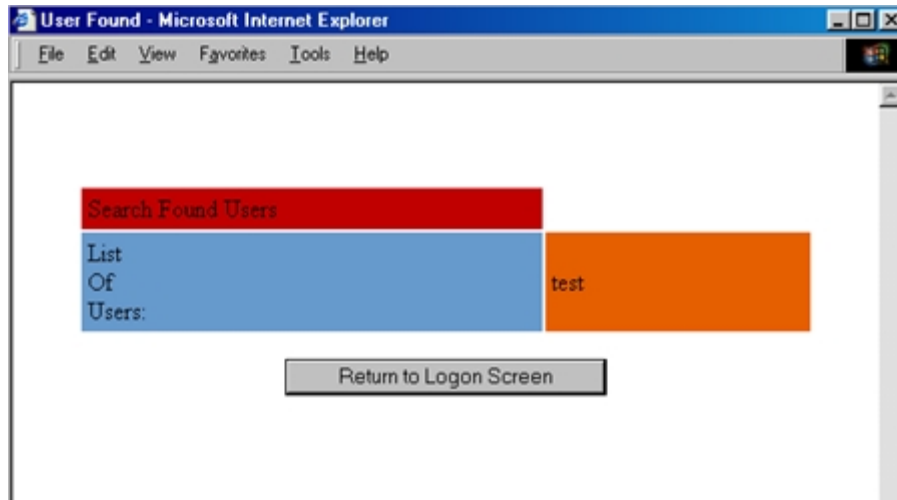
- **Register Confirmation View** confirms registration and returns the user to the Logon View.



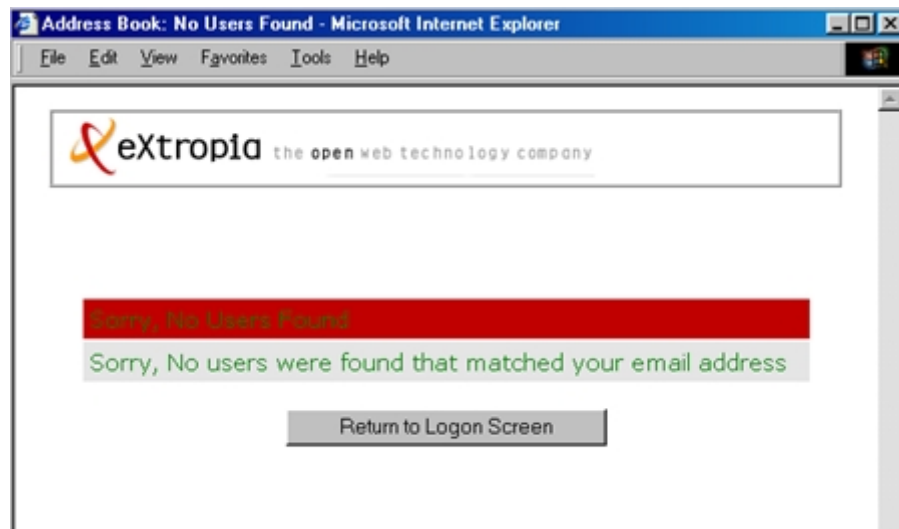
- **Search for Account** requests an email address to match users and then sends the password to the user.



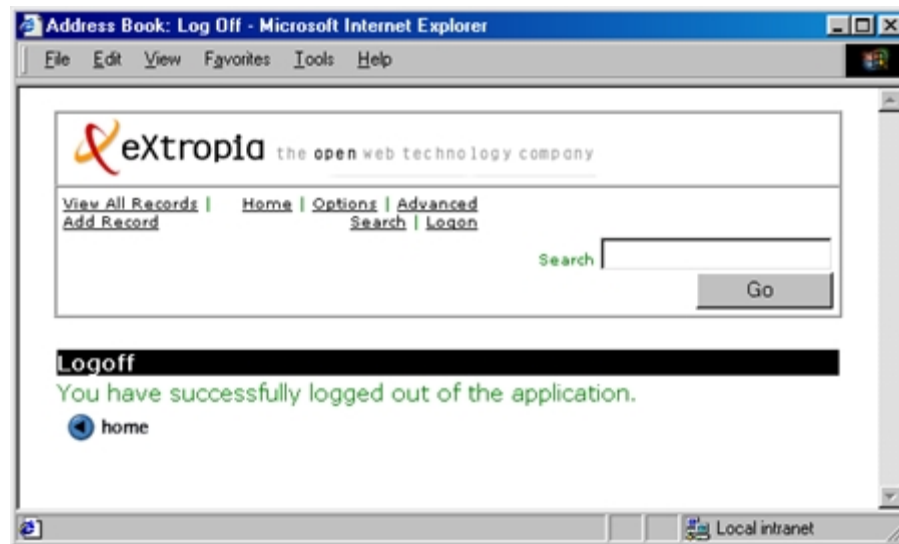
- **Search for Account Users Found** displays the username that matches the email address given.



- **Search for Users No Results** appears when no email address is associated with a username.



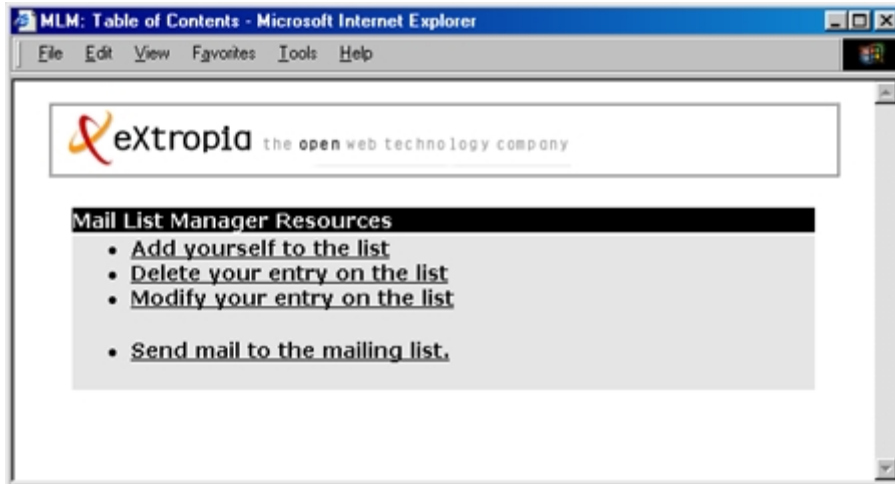
- **Logoff View** logs the user out and confirms the logoff. The session is terminated.



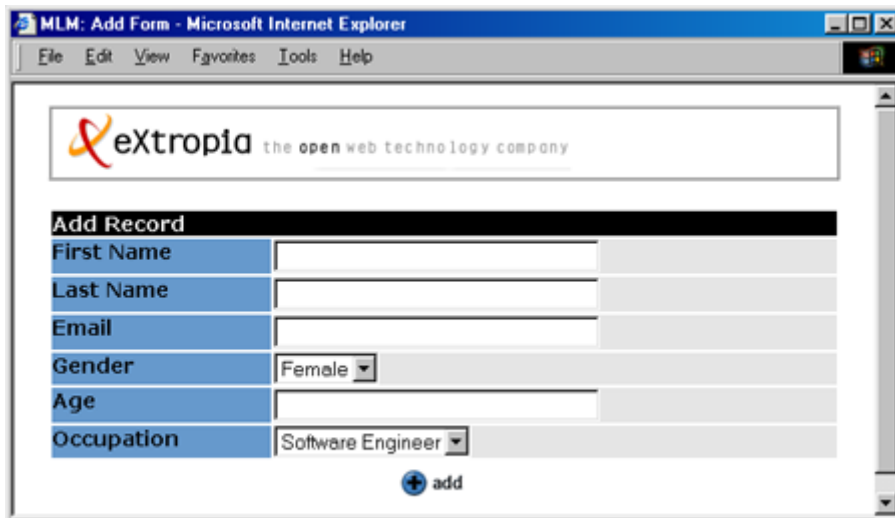
**Application Specific View Definitions**

Unless specified by the administrator, any user may add a new record. Sending mail requires a separate authorization through the Authentication database.

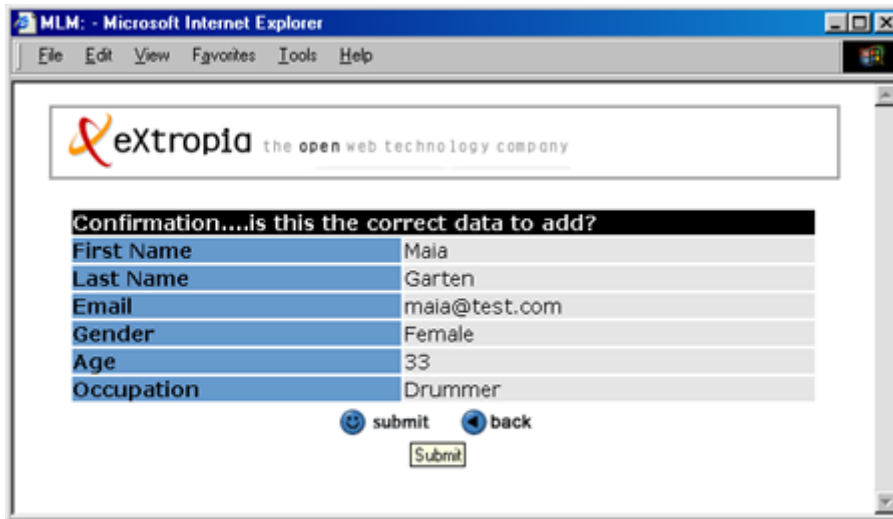
- **Home View** has four links: Add, Modify, Delete, and Send Mail.



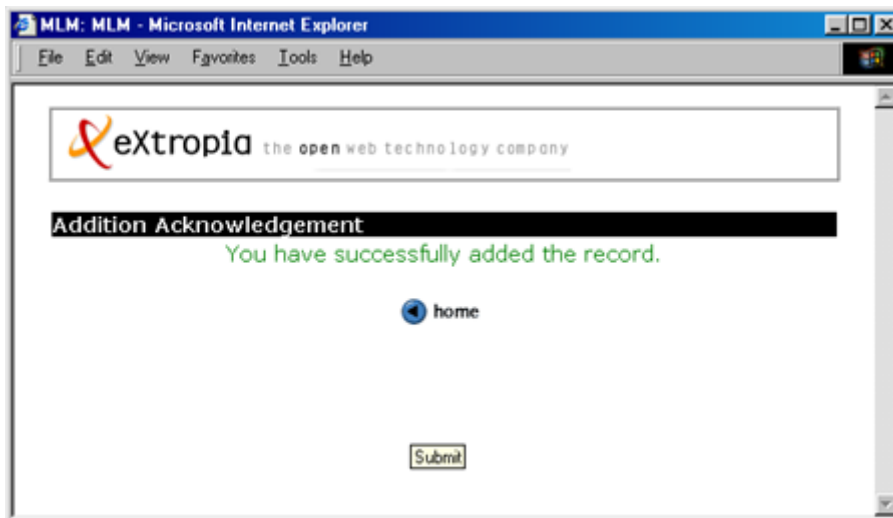
- **Add Record Form** will allow any user to enter a record based on first name, last name, email, gender, age, and occupation.



- **Confirmation View** will display details for final confirmation before they are added to the data source.

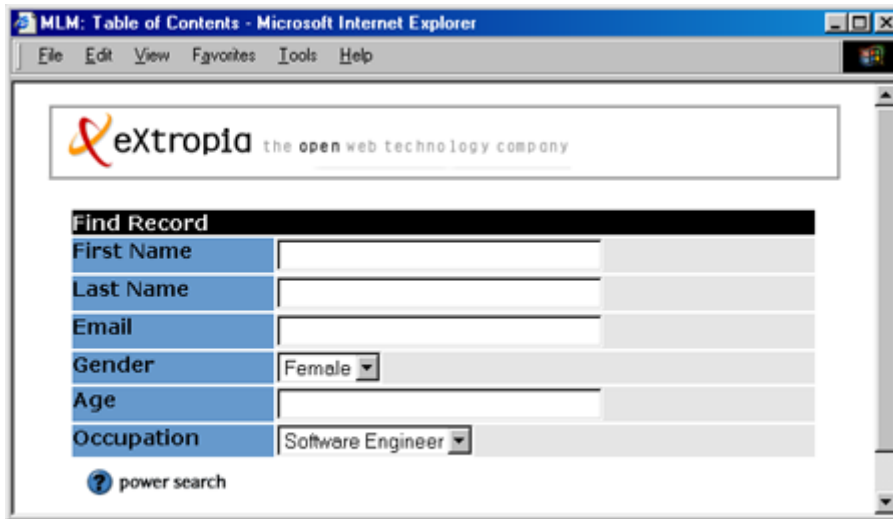


- **Acknowledgement View** will be displayed after a record is added to let the user know that the action was successful.

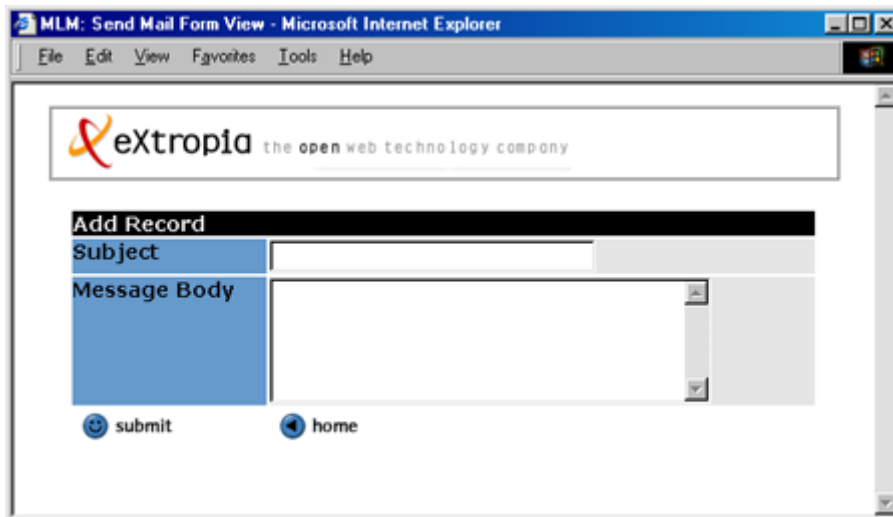




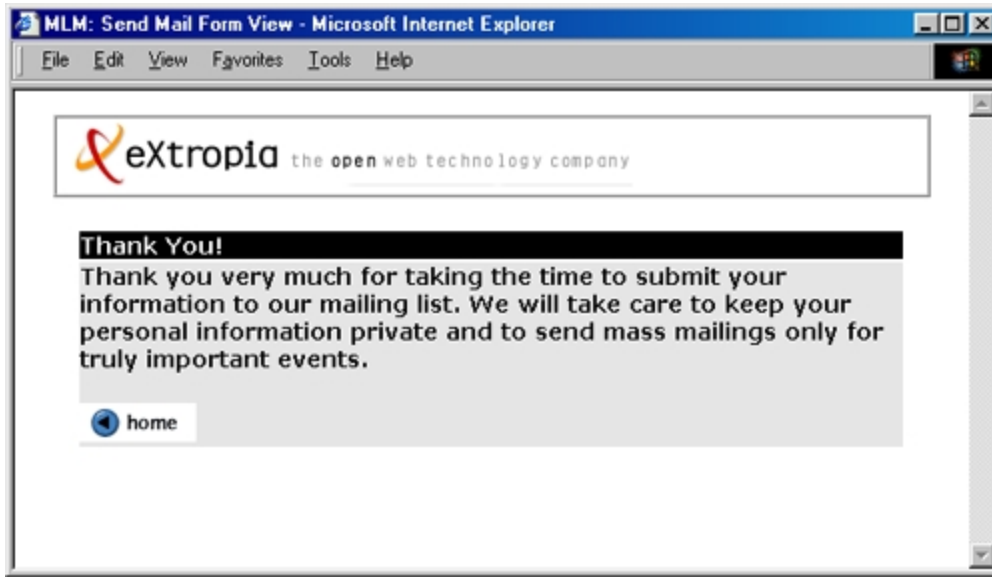
- **Modify and Delete Record Search** permits any user to search for his information and then change or delete it with the Modify Record and Delete Views.



- **Modify Record View** will allow the user who supplied enough details to modify the record.
- **Delete View** confirms and then deletes the selected record.
- **Details View** displays the entire record. User may then Modify or Delete.
- **Send Mail Add Record Page** allows the authorized user to send mail to the list. Subject and message body are the only two fields.



- **Send Mail Acknowledgment Page** Thanks the user for his entry. Links to home Screen.



**Common Features Definitions**

No common definition views.

**3.1.2 Risks and Dependencies**

There is a distinct possibility that any user with enough information can alter the record of a subscriber. While changes are logged, most amateur administrators will not notice or check.

Since there is a separate database for users authorized to send mail, there could be a mismatch between senders and receivers. This is not a serious problem, but may cause confusion.

**4 Database Design**

**4.1 Description**

The data of the application will be stored in a flat file. Each data fields of a record will be separated by '|'.

| Field Name         | Description          | Data Type                     |
|--------------------|----------------------|-------------------------------|
| record_id          | Record value         | Auto incremental numericvalue |
| fname              | First Name           | char                          |
| lname              | Last Name            | char                          |
| email              | Email address        | Char                          |
| gender             | Gender               | Char                          |
| age                | Age in years         | Char                          |
| occupation         | Occupation as listed | Char                          |
| username_of_poster | Username of poster   | Char                          |
| group_of_poster    | Poster's Group       | Char                          |
| date_time_posted   | Timestamp            | date                          |

## 4.2 Communications Interfaces

# 5 Other non-functional attributes

## 5.1 Reliability

Highly reliable in a properly secured environment.

## 5.2 Maintainability

Requires little maintenance. Owners will want to clear out a large flatfile now and then as well as ensure their installation is secure from hackers. Users of relational databases will probably not need to clear out their database. There is a risk that authorized senders and regular members of the list will be out of sync.

A modular architecture provides easy maintenance and upgrades.

## 5.3 Portability

The list of mailing list subscribers will be difficult to port to other applications. The script and its data are easily moved from server to server, however.

## 5.4 Extensibility

Information entered via MLM is portable to any relational database. The program can easily be switched to a new database with just a few lines of code. The program relies on the eXtropa ADT that divorces form and function.

## 5.5 Reusability

MLM is highly reusable. The application can be modified for just about anything!

## 5.6 Serviceability